



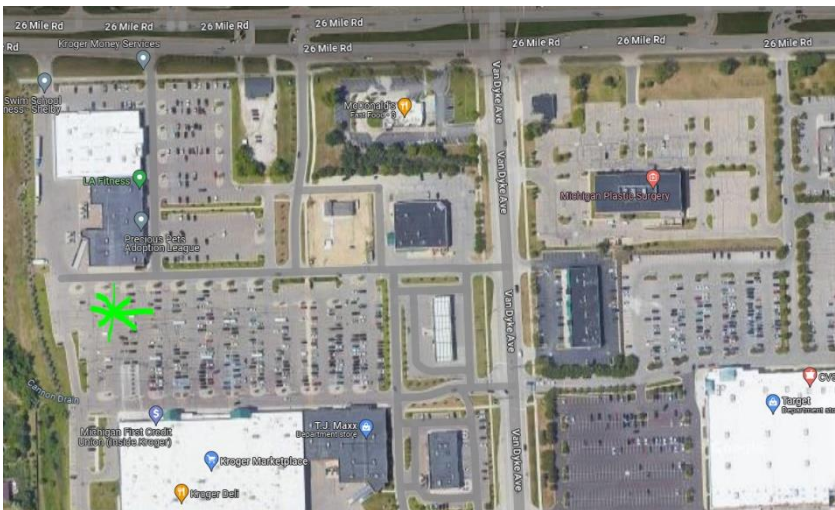
2024 Day Camp Shuttle Information

Locations and times



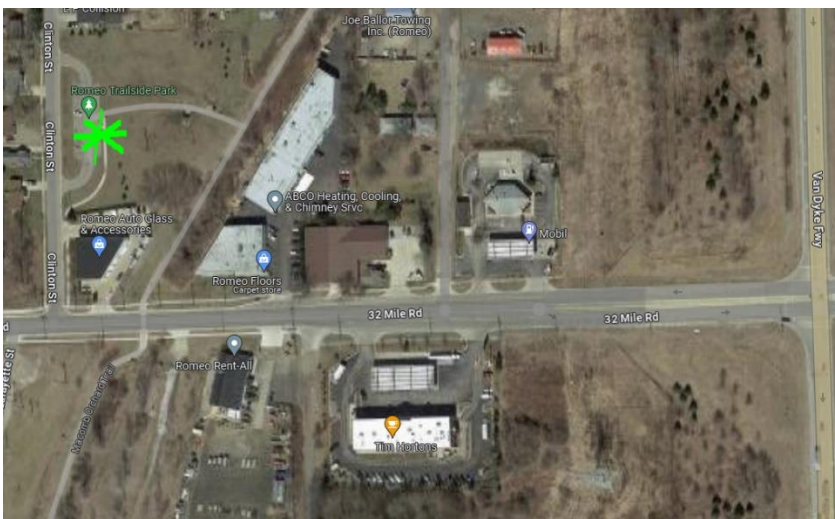
Rochester

- Hollywood Market parking lot. Corner of Tienken and Rochester Roads
- Pick up time Mon-Fri 7:40am
- Drop off time Mon-Thu 5:40pm; **Friday 2:40pm.**



Shelby Township

- Back corner (north west) of Kroger parking lot, corner of 26 Mile and Van Dyke.
- Pick up time Mon-Fri 8:00 am
- Drop off time Mon-Thu 5:20 pm; **Friday 2:20pm.**



Romeo

- Parking lot of Romeo Trailside Park, Clinton Street running north off 32 Mile Rd., access point for Macomb-Orchard Trail.
- Pick up time Mon-Fri 8:15 am
- Drop off time Mon-Thu 5:05 pm; **Friday 2:05pm.**

Communication

If you are running late more than five minutes:

- Text **810-798-8240**, with camper's name and your ETA.

If your camper is not riding the bus that day:

- Text **810-798-8240** as soon as you know – do not wait for the pickup time, please.

If we are running late more than ten minutes, we will text parents/caregivers with information. If we have any emergencies, we will do the same.

Safety Highlights

Our full transport policy is available on our website:

<https://www.campskyline.org/resources-and-policies>

- Seatbelts must be worn by all riders.
- Minimum two staff on the vehicle always.
- If a booster seat is required, parents/caregivers must provide this.
- Campers are under the care of camp staff *en route*, and camp behavior expectations are to be followed.
- No food on the bus. Water is OK.